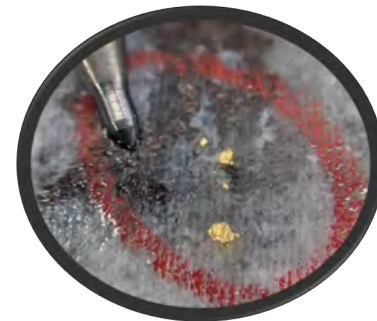
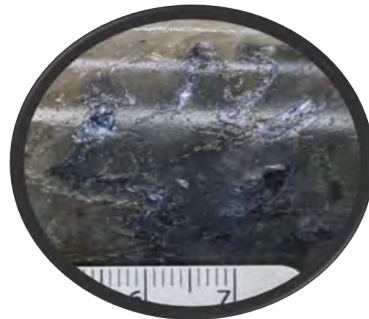
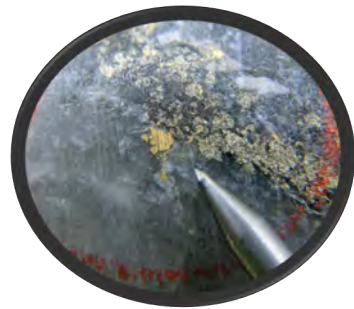


Regional Drilling Program 2025

Perron Project



Targeting at the regional scale of the Perron Property

- Compilation of all data from drill holes, geochemistry, geophysics and structures
- New structural analysis to hit the gold corridor

2025 drilling campaign includes:

- Several holes located in the Normétal Volcanic Sequence (pluton contact), Beaupré Block and Normétal South Block.
- New targeting on the Patten Pluton which hosts the significant Patten fault which could be subject to mineralization

	May	June	July	August	September	October	November	December
Drilling	x	x	x	x	x	x	x	x
Surveying						x	x	
Mapping		x	x	x	x	x		

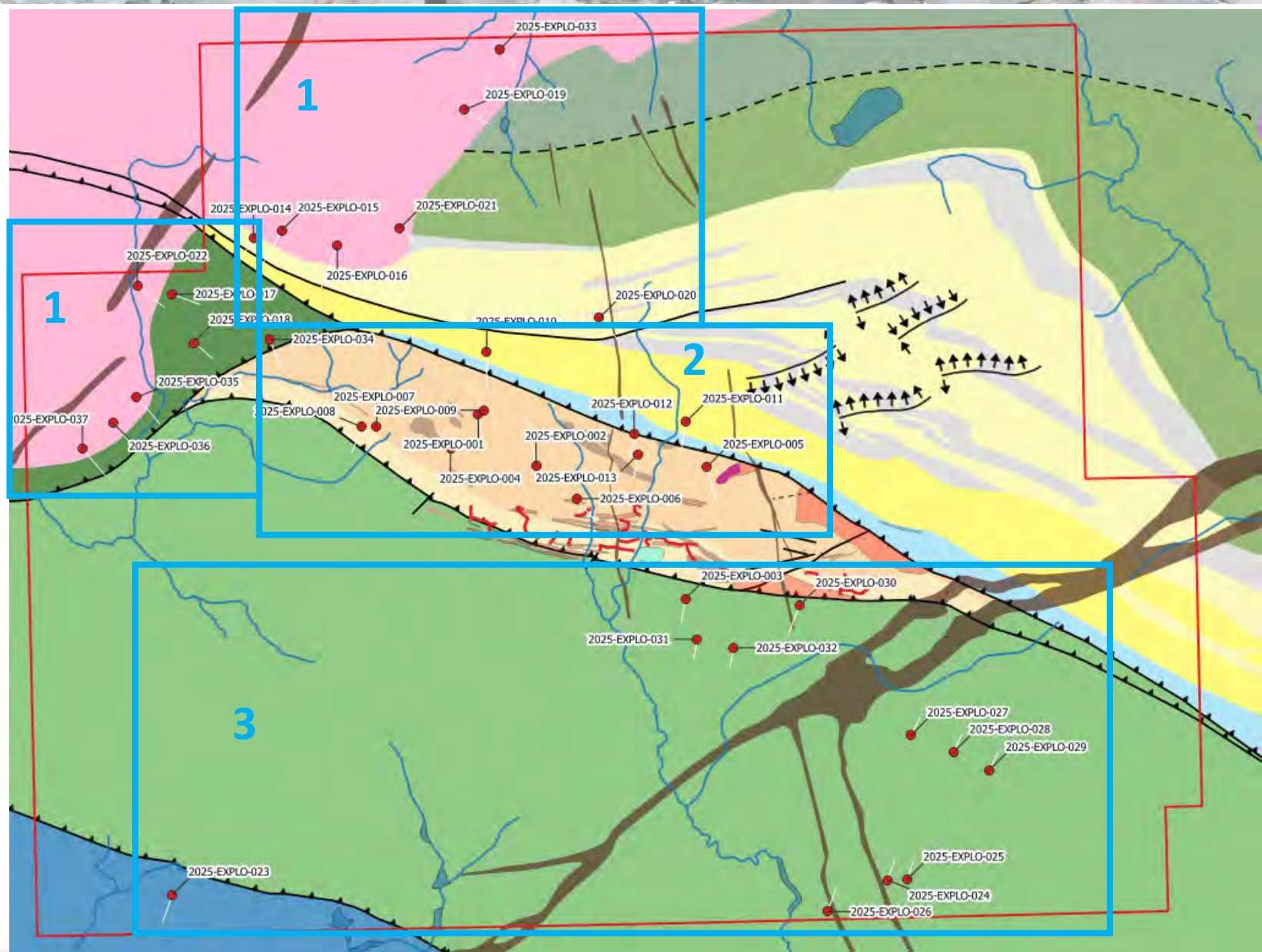


Proposal regional exploration drill plan

- Total of 37 drill hole for **11,875 m**

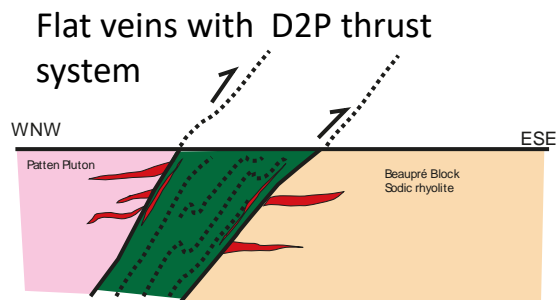
3 sectors:

1. Patten pluton & Patten fault
2. Beaupré Block
3. Normétal South Block

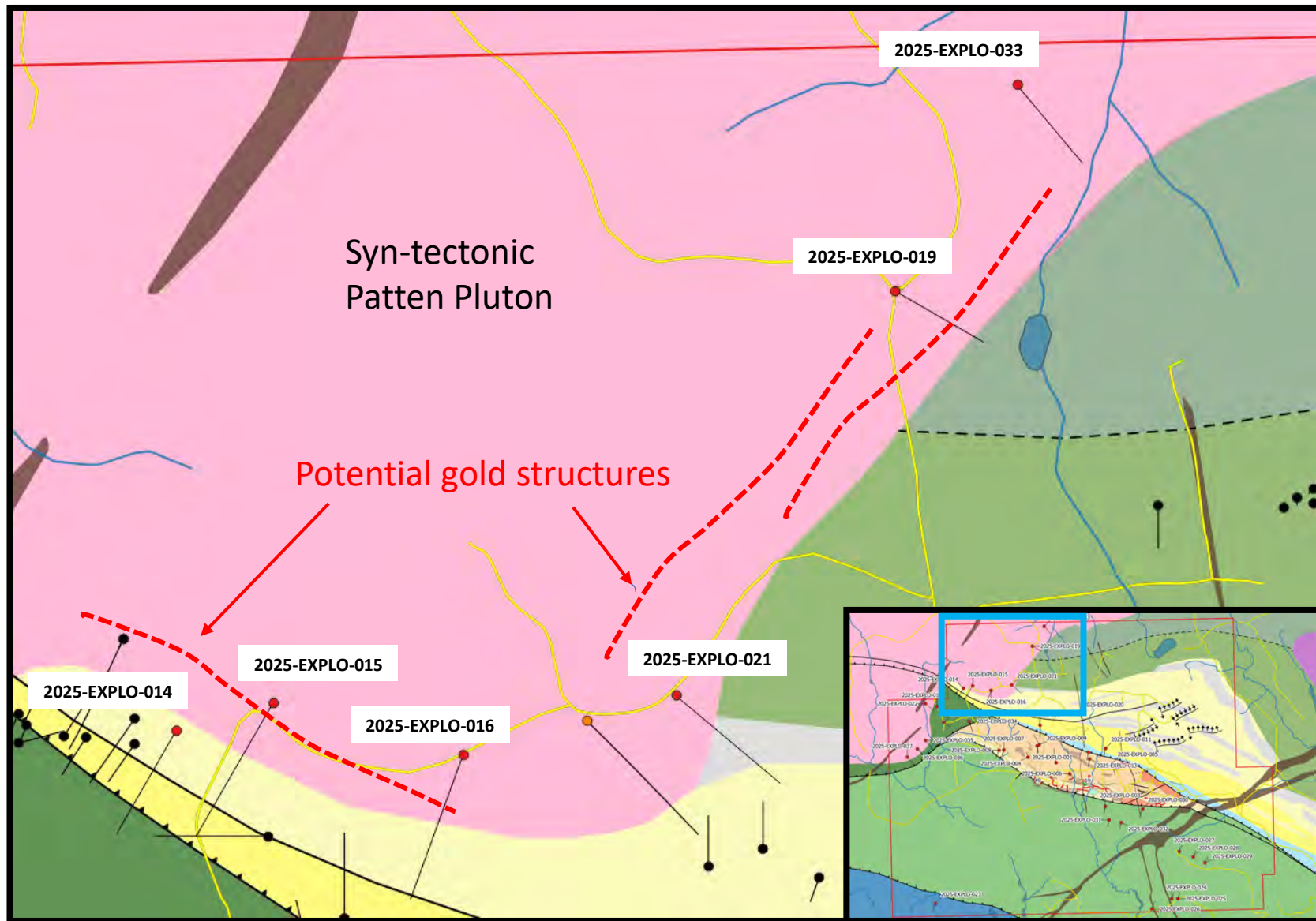


Proposals

North Patten Pluton's contact & Patten fault

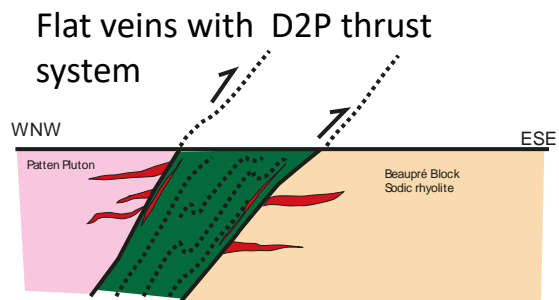


Drillhole Name	Elevation	Azimuth	Dip	Depth
2025-EXPLO-014	330	210	-45	350
2025-EXPLO-015	341	210	-50	500
2025-EXPLO-016	330	200	-50	500
2025-EXPLO-021	330	130	-45	400
2025-EXPLO-019	330	120	-45	300
2025-EXPLO-033	322	140	-45	300
2025-EXPLO-022	330	130	-45	350
2025-EXPLO-017	330	110	-45	300
2025-EXPLO-018	330	130	-45	250
2025-EXPLO-035	321	140	-45	350
2025-EXPLO-036	321	140	-45	350
2025-EXPLO-037	321	140	-45	350
2025-EXPLO-020	330	140	-45	300

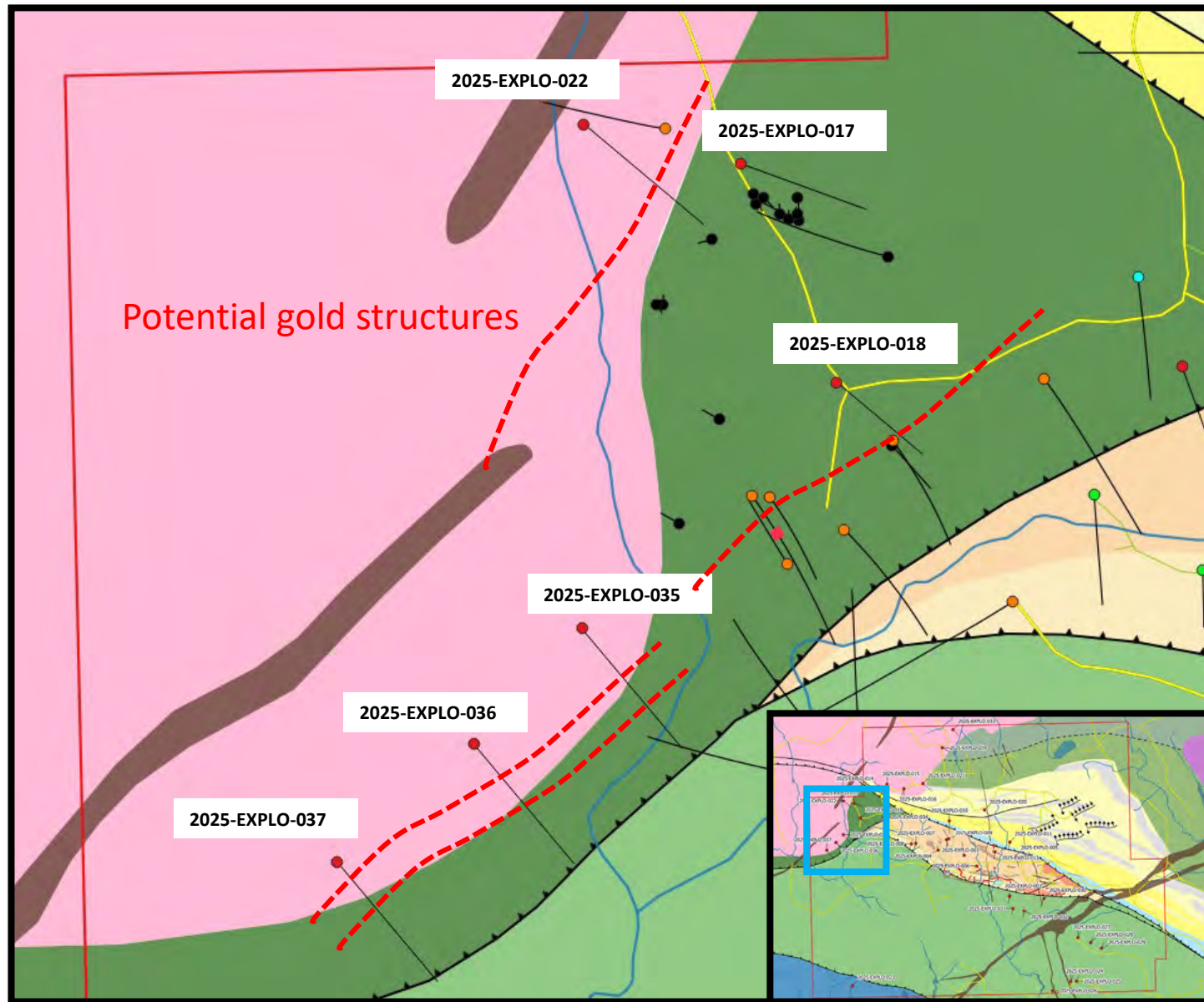


Proposals

Patten Pluton's contact & Patten fault



Drillhole Name	Elevation	Azimuth	Dip	Depth
2025-EXPLO-014	330	210	-45	350
2025-EXPLO-015	341	210	-50	500
2025-EXPLO-016	330	200	-50	500
2025-EXPLO-021	330	130	-45	400
2025-EXPLO-019	330	120	-45	300
2025-EXPLO-033	322	140	-45	300
2025-EXPLO-022	330	130	-45	350
2025-EXPLO-017	330	110	-45	300
2025-EXPLO-018	330	130	-45	250
2025-EXPLO-035	321	140	-45	350
2025-EXPLO-036	321	140	-45	350
2025-EXPLO-037	321	140	-45	350
2025-EXPLO-020	330	140	-45	300

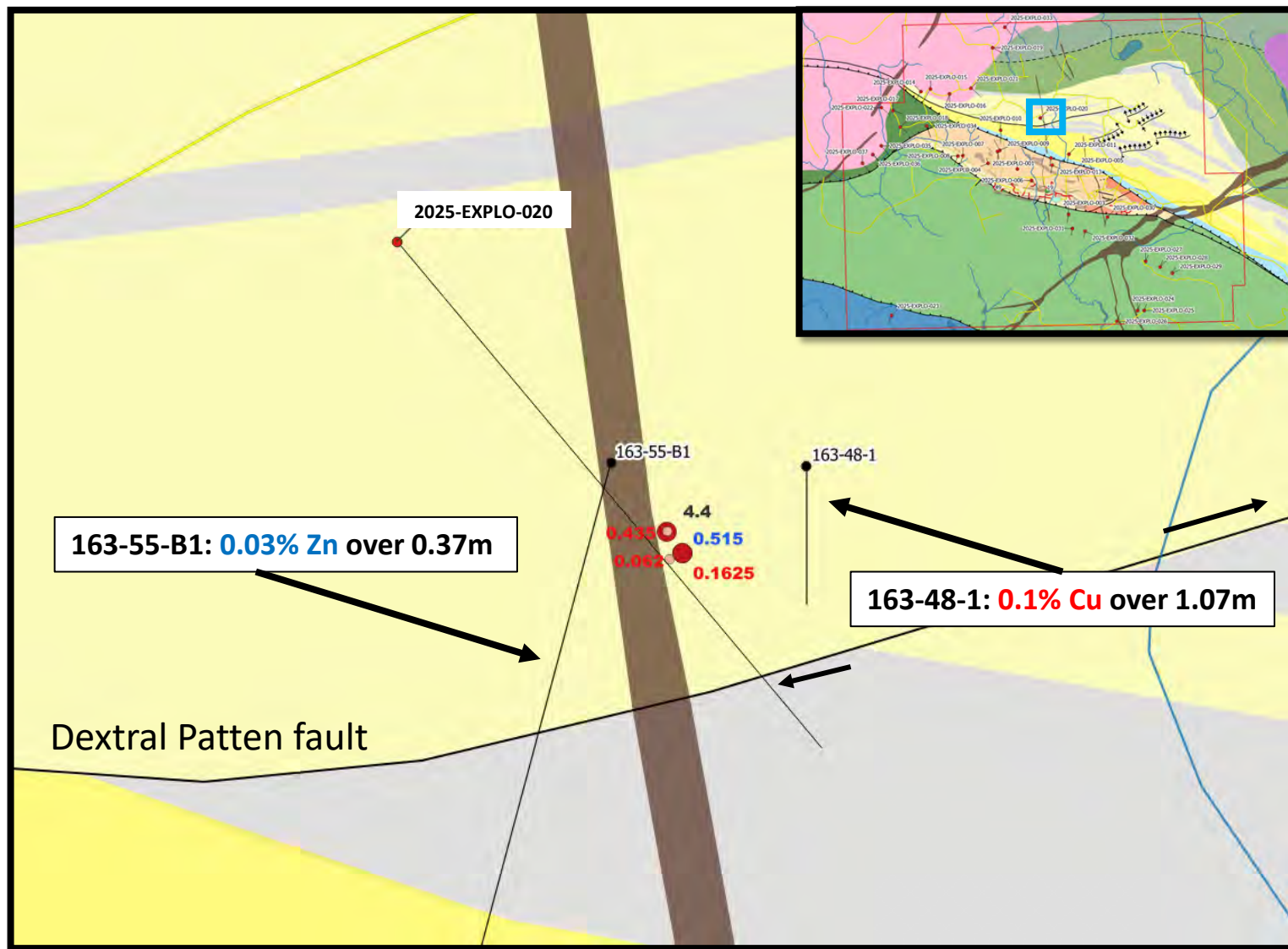


Proposals

Summer 2024 prospecting results follow-up + Patten fault

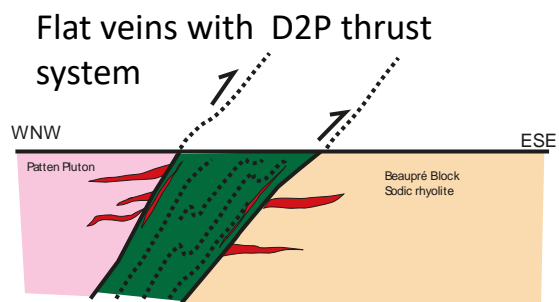


Drillhole Name	Elevation	Azimuth	Dip	Depth
2025-EXPLO-014	330	210	-45	350
2025-EXPLO-015	341	210	-50	500
2025-EXPLO-016	330	200	-50	500
2025-EXPLO-021	330	130	-45	400
2025-EXPLO-019	330	120	-45	300
2025-EXPLO-033	322	140	-45	300
2025-EXPLO-022	330	130	-45	350
2025-EXPLO-017	330	110	-45	300
2025-EXPLO-018	330	130	-45	250
2025-EXPLO-035	321	140	-45	350
2025-EXPLO-036	321	140	-45	350
2025-EXPLO-037	321	140	-45	350
2025-EXPLO-020	330	140	-45	300

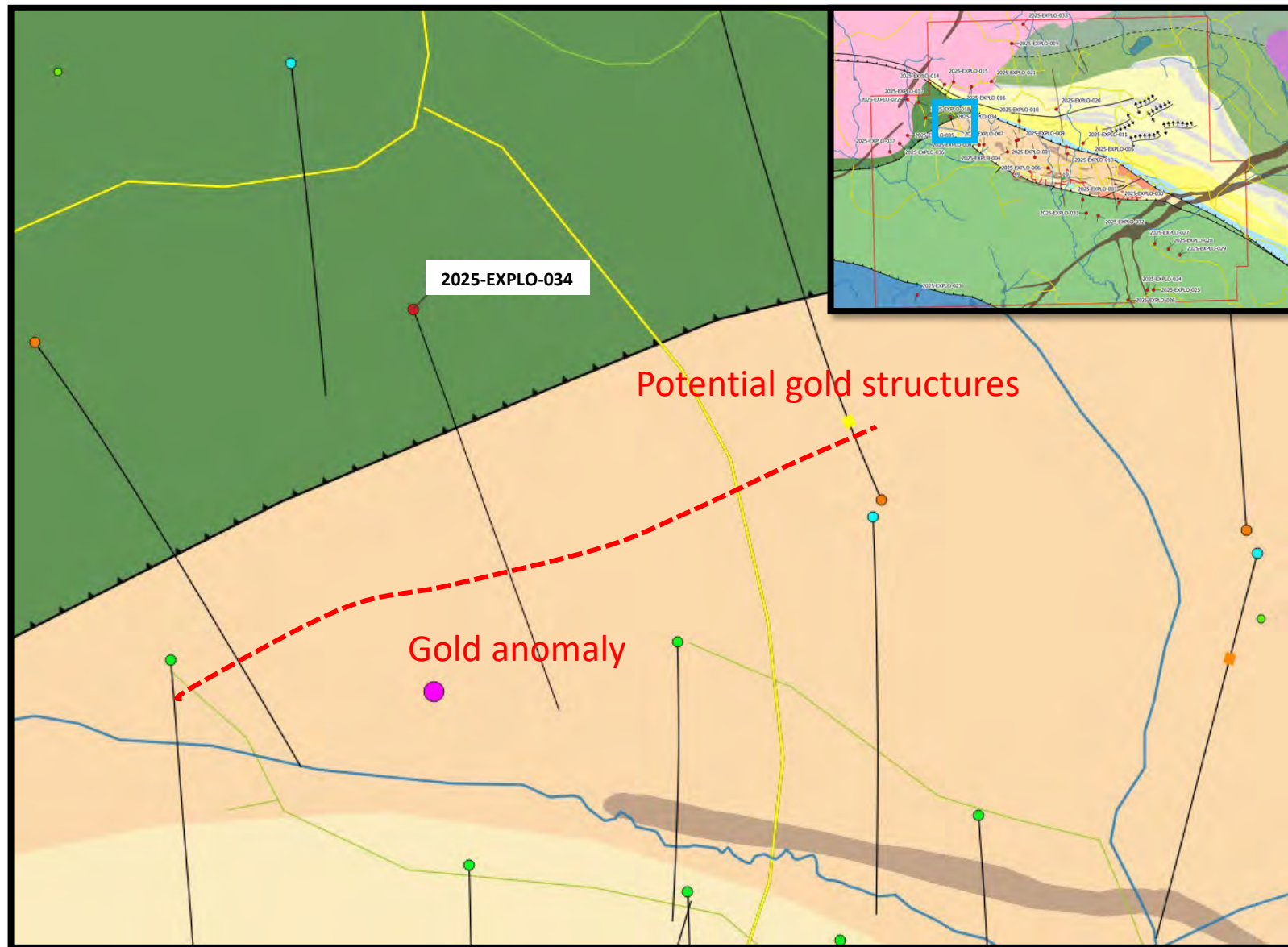


Proposals

Ionic Leach Au anomaly + Normétal fault contact



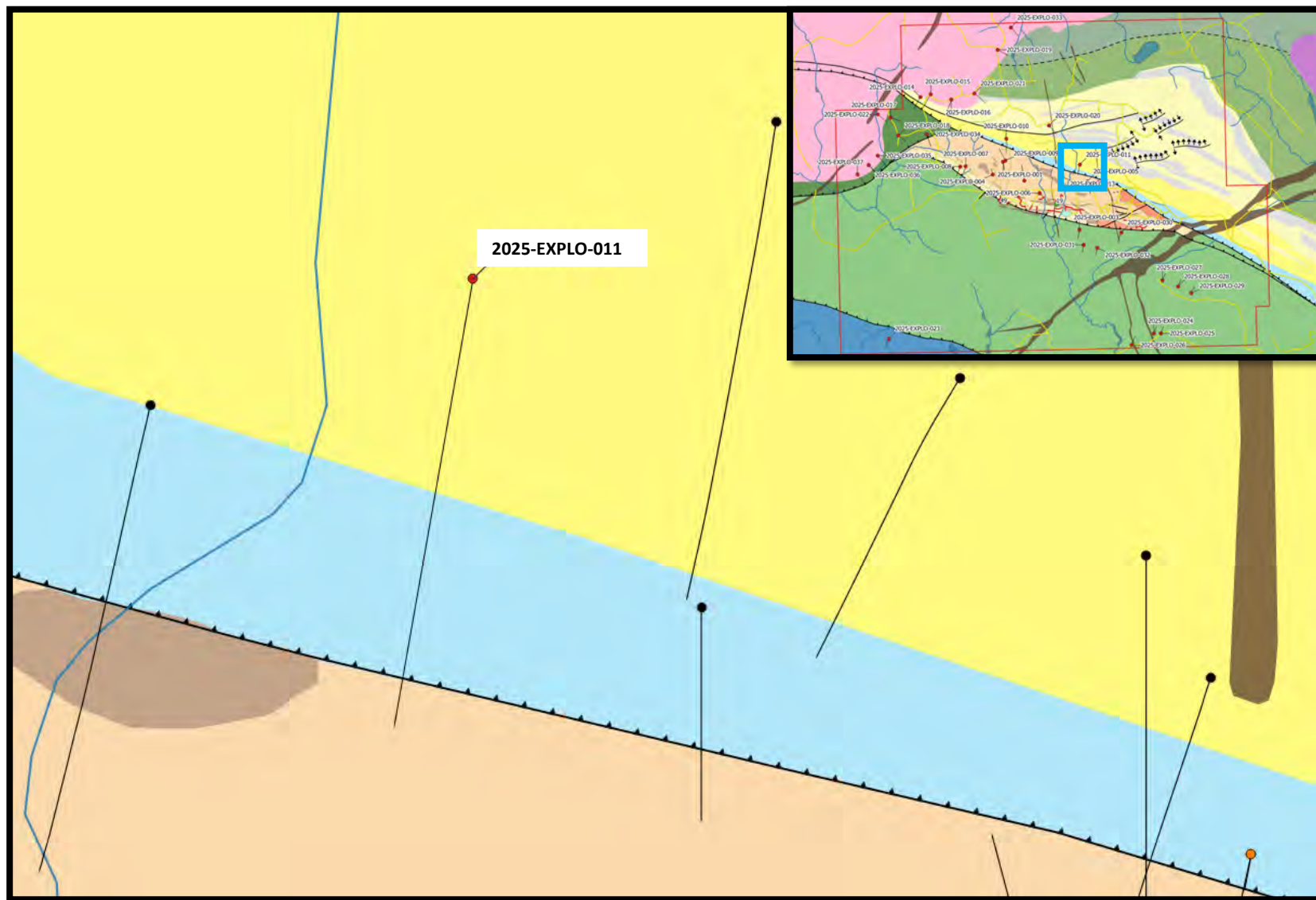
Drillhole Name	Elevation	Azimuth	Dip	Depth
2025-EXPLO-034	321	160	-45	350
2025-EXPLO-011	330	190	-60	400
2025-EXPLO-004	330	340	-45	150
2025-EXPLO-001	330	170	-70	450
2025-EXPLO-002	330	350	-45	450
2025-EXPLO-005	330	165	-60	500
2025-EXPLO-006	330	140	-68	600
2025-EXPLO-007	330	200	-65	350
2025-EXPLO-008	330	200	-45	275
2025-EXPLO-009	330	330	-45	350
2025-EXPLO-010	330	180	-45	400
2025-EXPLO-012	330	190	-45	250
2025-EXPLO-013	330	190	-45	250



Proposals

Normétal fault & ultramafic intrusive intersection – JT Zone similarities?
 Also possibility for Team Zone like mineralization

Drillhole Name	Elevation	Azimuth	Dip	Depth
2025-EXPLO-034	321	160	-45	350
2025-EXPLO-011	330	190	-60	400
2025-EXPLO-004	330	340	-45	150
2025-EXPLO-001	330	170	-70	450
2025-EXPLO-002	330	350	-45	450
2025-EXPLO-005	330	165	-60	500
2025-EXPLO-006	330	140	-68	600
2025-EXPLO-007	330	200	-65	350
2025-EXPLO-008	330	200	-45	275
2025-EXPLO-009	330	330	-45	350
2025-EXPLO-010	330	180	-45	400
2025-EXPLO-012	330	190	-45	250
2025-EXPLO-013	330	190	-45	250

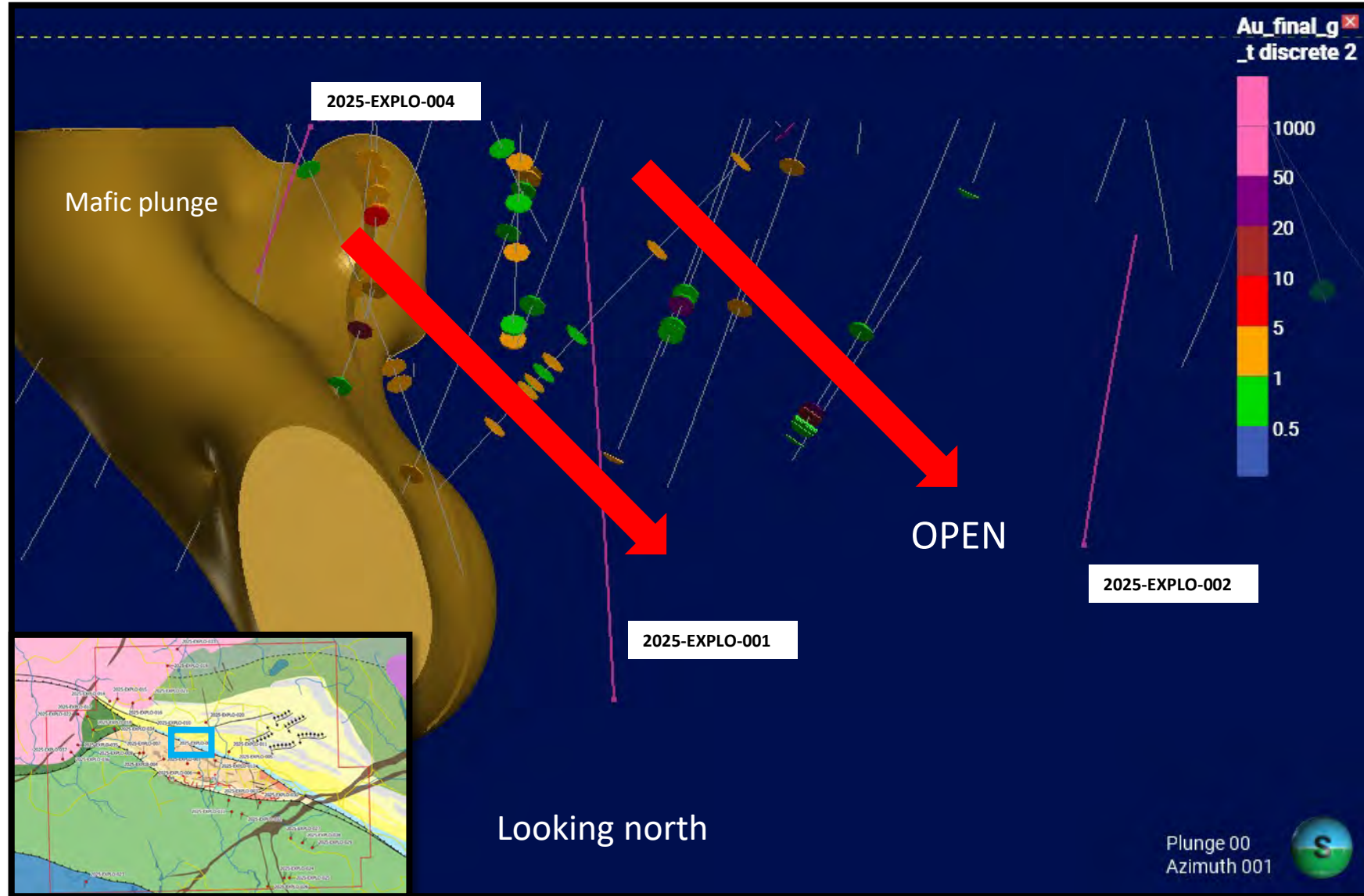


Proposals

N110 Gold Corridor interpreted strike – Following the strike of the mafic intrusive

Hypothesis of the mineralization plunging to the east like the HGZ

Drillhole Name	Elevation	Azimuth	Dip	Depth
2025-EXPLO-034	321	160	-45	350
2025-EXPLO-011	330	190	-60	400
2025-EXPLO-004	330	340	-45	150
2025-EXPLO-001	330	170	-70	450
2025-EXPLO-002	330	350	-45	450
2025-EXPLO-005	330	165	-60	500
2025-EXPLO-006	330	140	-68	600
2025-EXPLO-007	330	200	-65	350
2025-EXPLO-008	330	200	-45	275
2025-EXPLO-009	330	330	-45	350
2025-EXPLO-010	330	180	-45	400
2025-EXPLO-012	330	190	-45	250
2025-EXPLO-013	330	190	-45	250

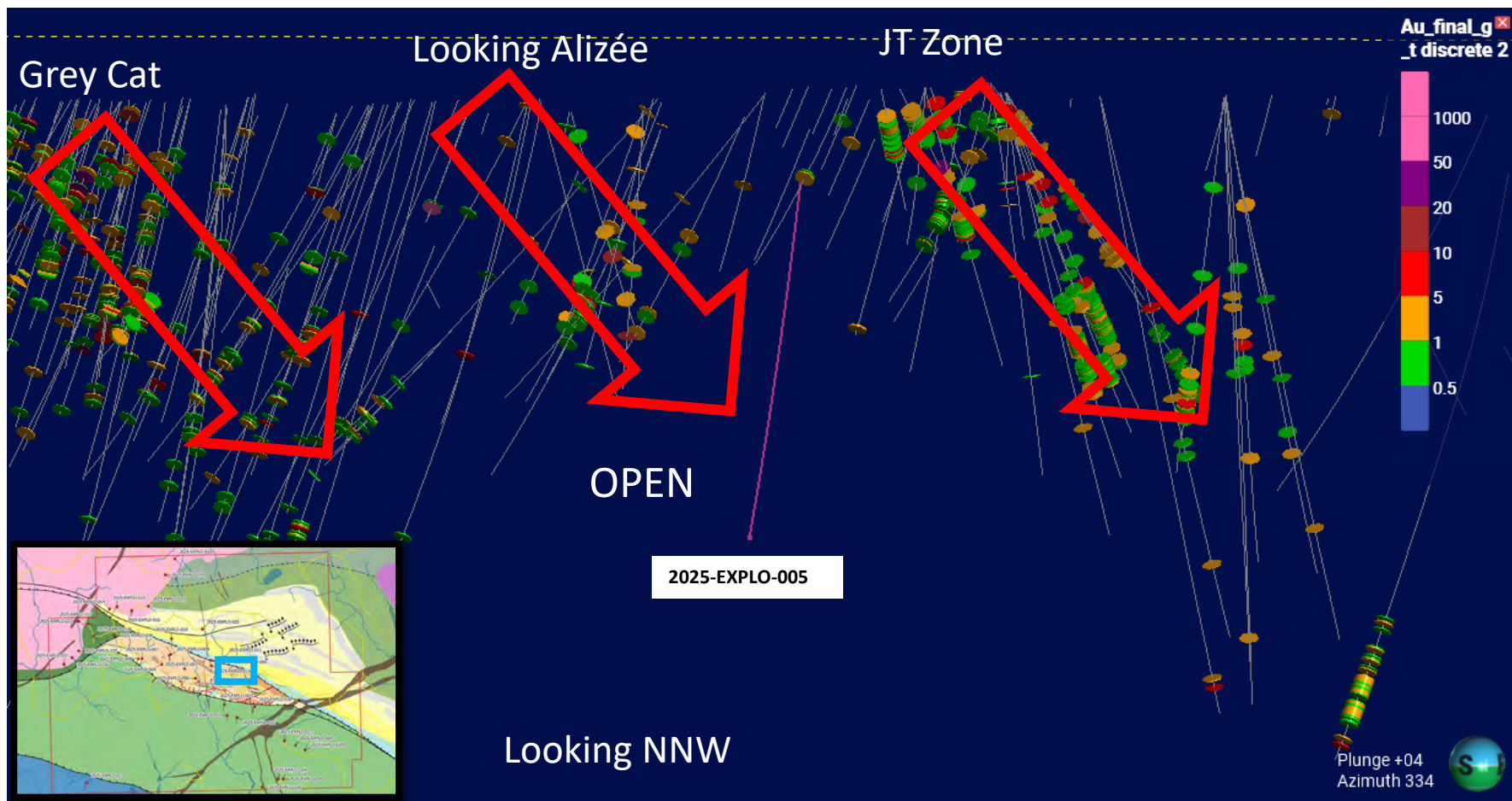


Proposals

Alizée Zone deeper extension
Hypothesis of N075 structure

Similar plunging to the east for
Alizée, Western Grey Cat Zone and
JT Zone

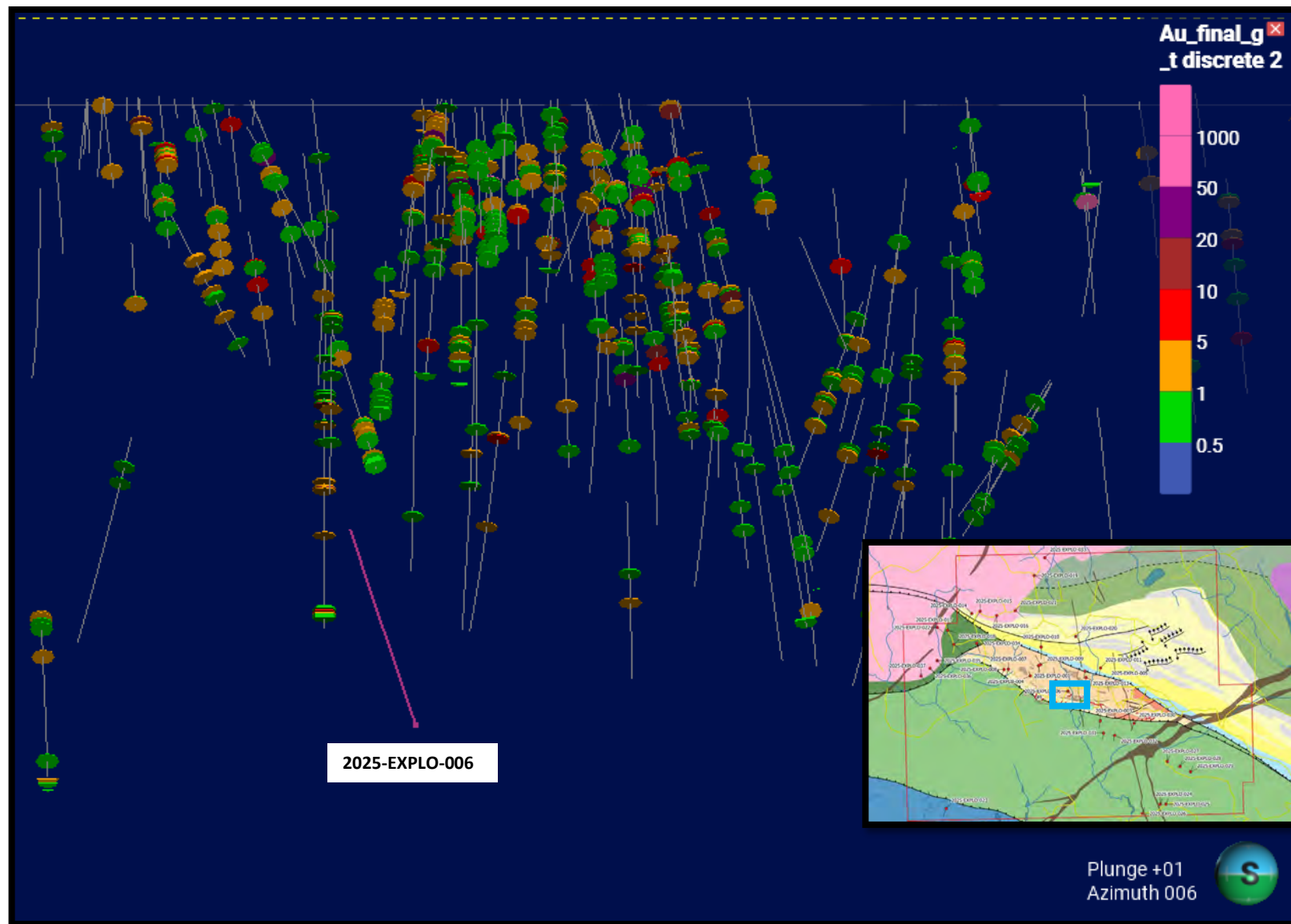
Drillhole Name	Elevation	Azimuth	Dip	Depth
2025-EXPLO-034	321	160	-45	350
2025-EXPLO-011	330	190	-60	400
2025-EXPLO-004	330	340	-45	150
2025-EXPLO-001	330	170	-70	450
2025-EXPLO-002	330	350	-45	450
2025-EXPLO-005	330	165	-60	500
2025-EXPLO-006	330	140	-68	600
2025-EXPLO-007	330	200	-65	350
2025-EXPLO-008	330	200	-45	275
2025-EXPLO-009	330	330	-45	350
2025-EXPLO-010	330	180	-45	400
2025-EXPLO-012	330	190	-45	250
2025-EXPLO-013	330	190	-45	250



Proposals

Western Grey Cat Deeper Extension

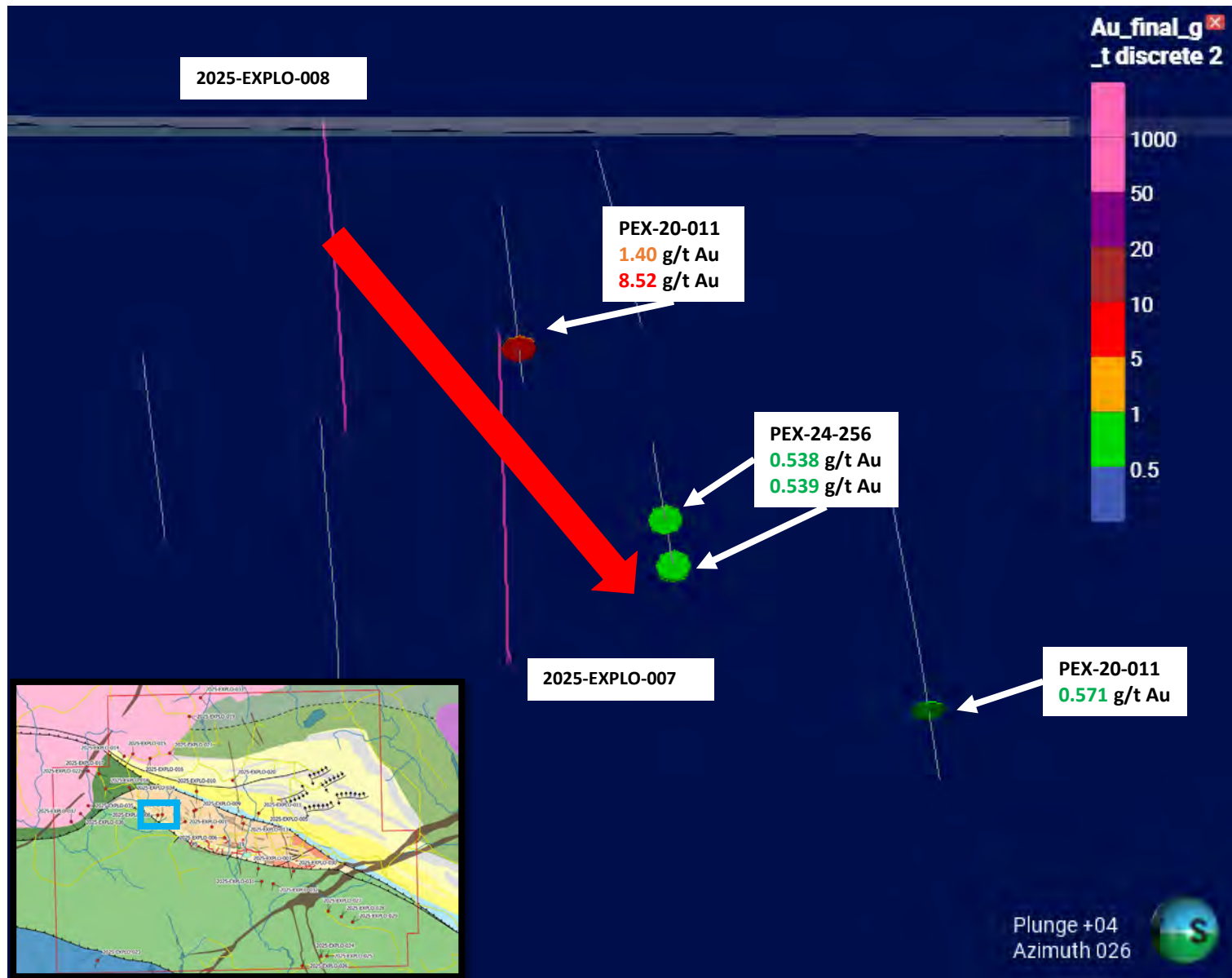
Drillhole Name	Elevation	Azimuth	Dip	Depth
2025-EXPLO-034	321	160	-45	350
2025-EXPLO-011	330	190	-60	400
2025-EXPLO-004	330	340	-45	150
2025-EXPLO-001	330	170	-70	450
2025-EXPLO-002	330	350	-45	450
2025-EXPLO-005	330	165	-60	500
2025-EXPLO-006	330	140	-68	600
2025-EXPLO-007	330	200	-65	350
2025-EXPLO-008	330	200	-45	275
2025-EXPLO-009	330	330	-45	350
2025-EXPLO-010	330	180	-45	400
2025-EXPLO-012	330	190	-45	250
2025-EXPLO-013	330	190	-45	250



Proposals

West of Gratién Gold Zone Near Perron fault
and follow-up of PEX-20-011

Drillhole Name	Elevation	Azimuth	Dip	Depth
2025-EXPLO-034	321	160	-45	350
2025-EXPLO-011	330	190	-60	400
2025-EXPLO-004	330	340	-45	150
2025-EXPLO-001	330	170	-70	450
2025-EXPLO-002	330	350	-45	450
2025-EXPLO-005	330	165	-60	500
2025-EXPLO-006	330	140	-68	600
2025-EXPLO-007	330	200	-65	350
2025-EXPLO-008	330	200	-45	275
2025-EXPLO-009	330	330	-45	350
2025-EXPLO-010	330	180	-45	400
2025-EXPLO-012	330	190	-45	250
2025-EXPLO-013	330	190	-45	250



Proposals

North of N110 Gold Corridor, N050 grade strike

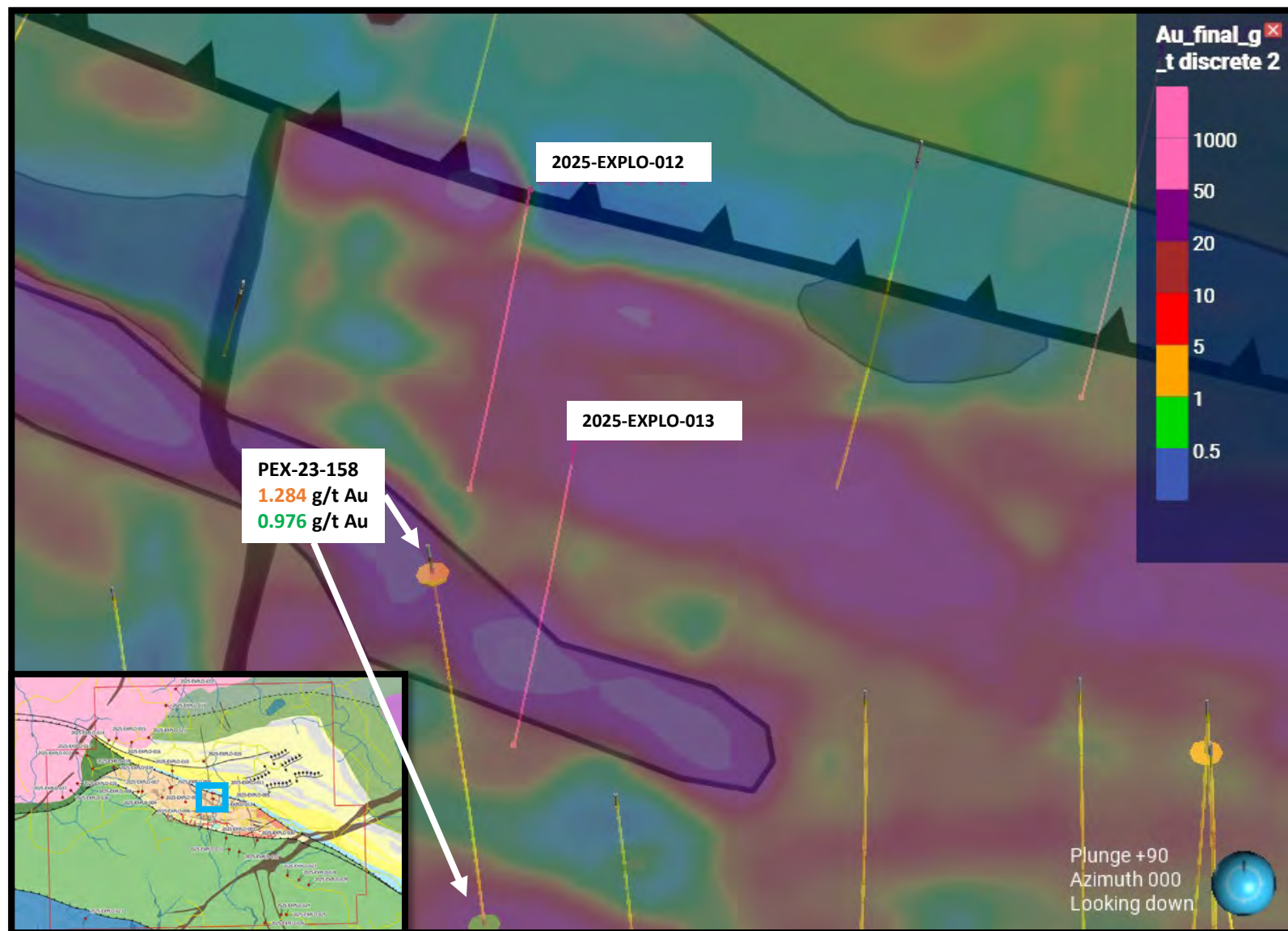
Drillhole Name	Elevation	Azimuth	Dip	Depth
2025-EXPLO-034	321	160	-45	350
2025-EXPLO-011	330	190	-60	400
2025-EXPLO-004	330	340	-45	150
2025-EXPLO-001	330	170	-70	450
2025-EXPLO-002	330	350	-45	450
2025-EXPLO-005	330	165	-60	500
2025-EXPLO-006	330	140	-68	600
2025-EXPLO-007	330	200	-65	350
2025-EXPLO-008	330	200	-45	275
2025-EXPLO-009	330	330	-45	350
2025-EXPLO-010	330	180	-45	400
2025-EXPLO-012	330	190	-45	250
2025-EXPLO-013	330	190	-45	250



Proposals

N110 lineament close to Normétal fault

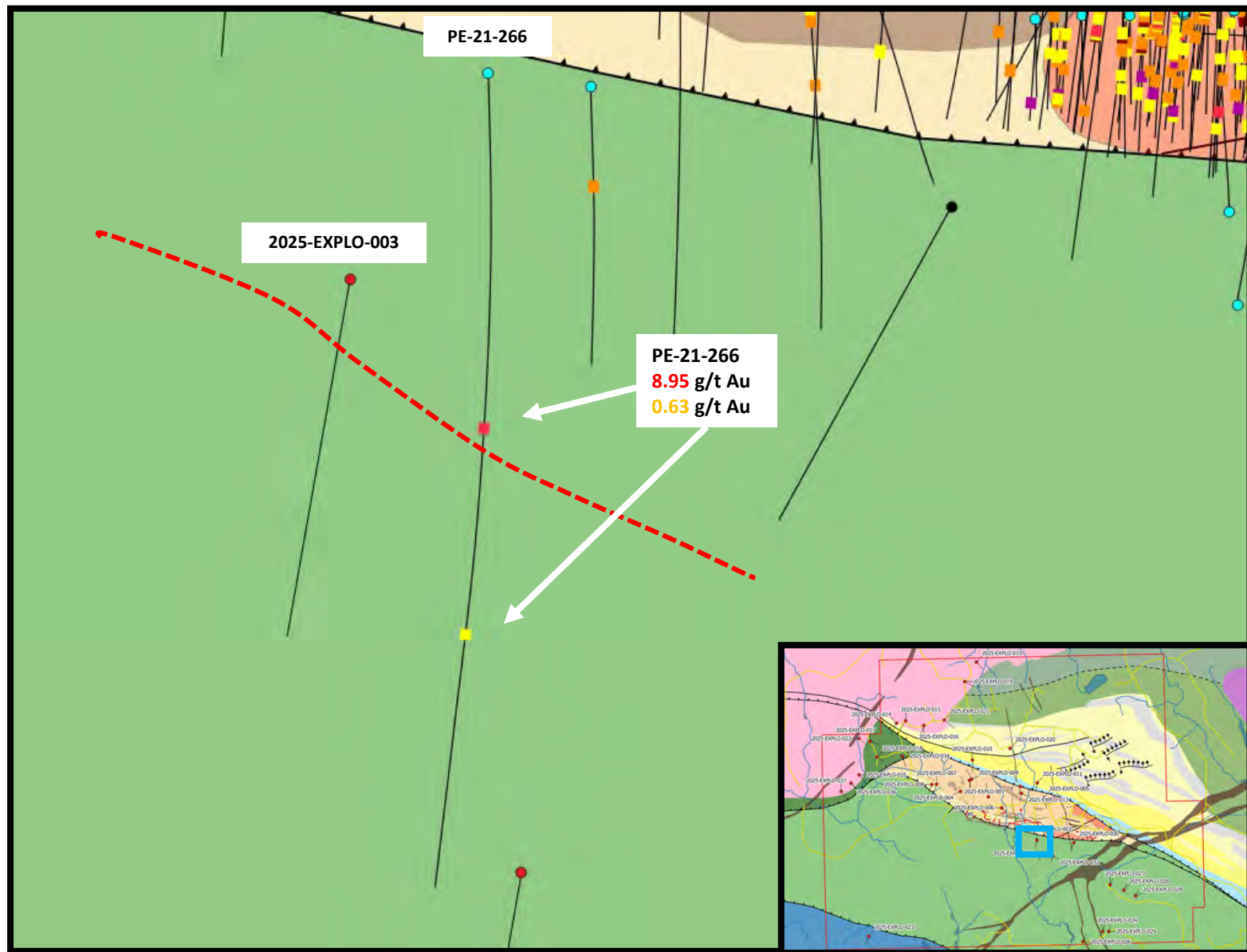
Drillhole Name	Elevation	Azimuth	Dip	Depth
2025-EXPLO-034	321	160	-45	350
2025-EXPLO-011	330	190	-60	400
2025-EXPLO-004	330	340	-45	150
2025-EXPLO-001	330	170	-70	450
2025-EXPLO-002	330	350	-45	450
2025-EXPLO-005	330	165	-60	500
2025-EXPLO-006	330	140	-68	600
2025-EXPLO-007	330	200	-65	350
2025-EXPLO-008	330	200	-45	275
2025-EXPLO-009	330	330	-45	350
2025-EXPLO-010	330	180	-45	400
2025-EXPLO-012	330	190	-45	250
2025-EXPLO-013	330	190	-45	250



Proposals

Follow-up of PE-21-266

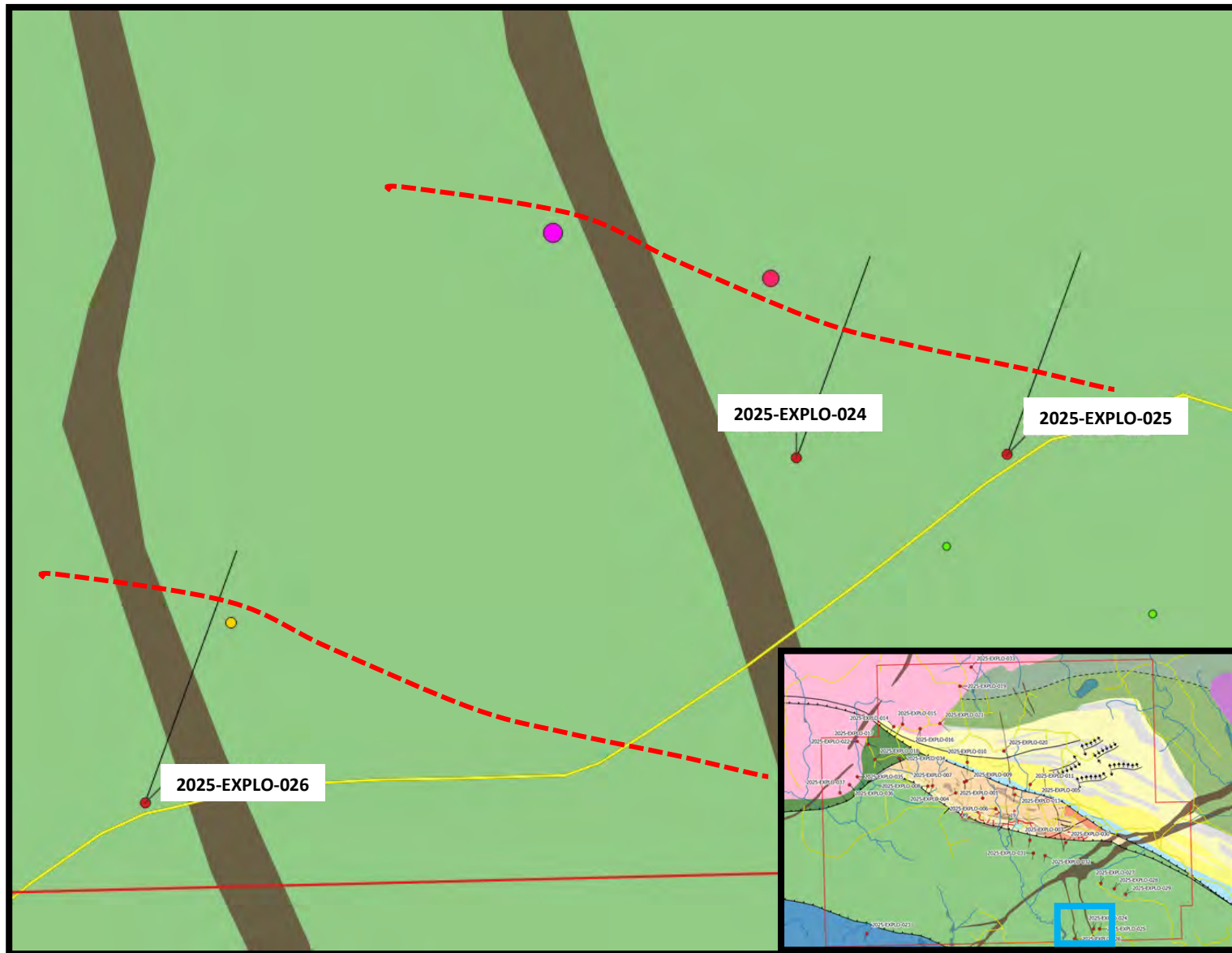
Drillhole Name	Elevation	Azimuth	Dip	Depth
2025-EXPLO-003	330	190	-45	250
2025-EXPLO-024	330	20	-45	200
2025-EXPLO-025	330	20	-45	200
2025-EXPLO-026	330	20	-45	250
2025-EXPLO-030	330	200	-45	300
2025-EXPLO-027	330	25	-45	200
2025-EXPLO-028	330	25	-45	200
2025-EXPLO-029	330	25	-45	200
2025-EXPLO-031	321	190	-45	200
2025-EXPLO-032	321	190	-45	200
2025-EXPLO-023	330	200	-45	300



Proposals

Following the trend of Ionic Leach Au anomaly

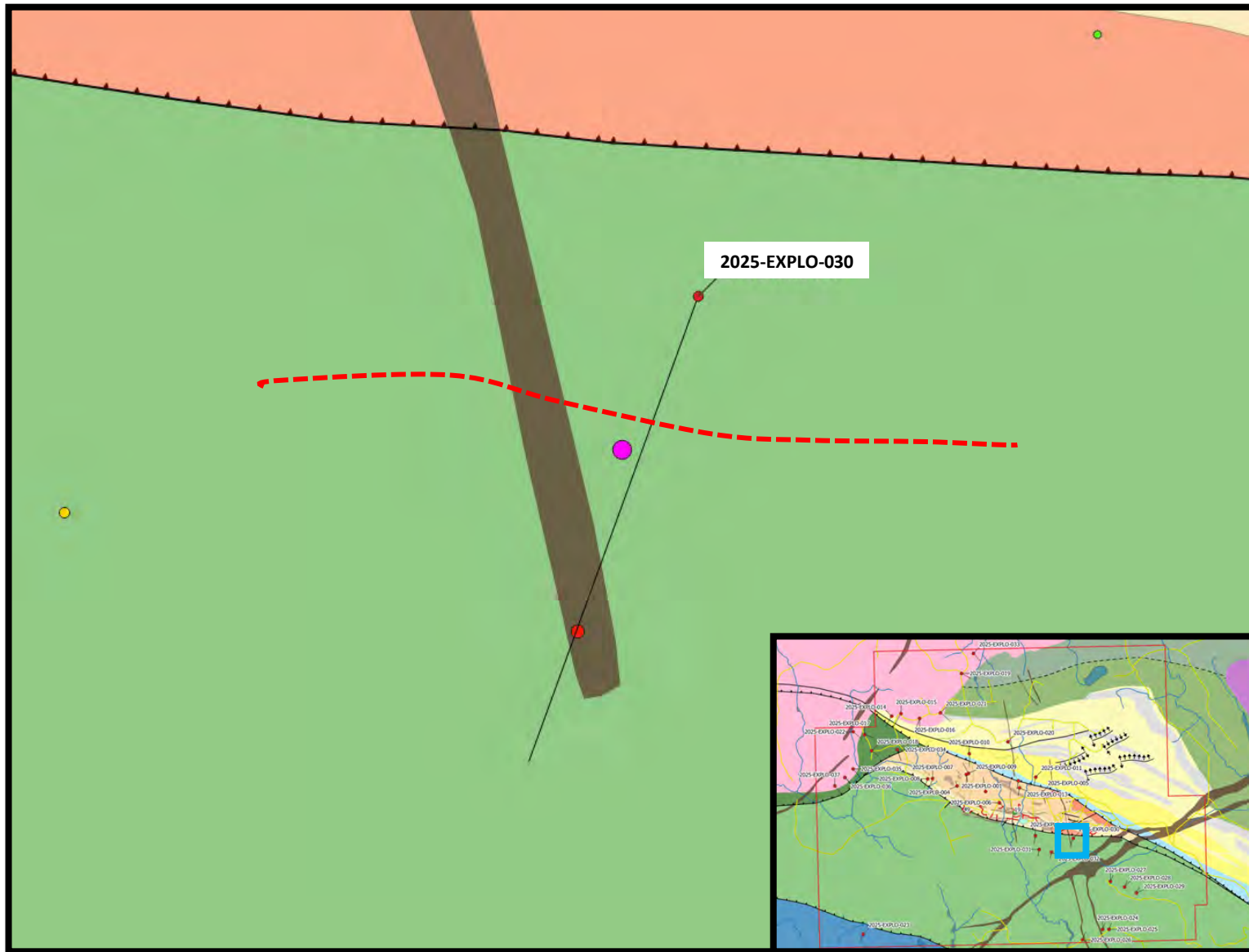
Drillhole Name	Elevation	Azimuth	Dip	Depth
2025-EXPLO-003	330	190	-45	250
2025-EXPLO-024	330	20	-45	200
2025-EXPLO-025	330	20	-45	200
2025-EXPLO-026	330	20	-45	250
2025-EXPLO-030	330	200	-45	300
2025-EXPLO-027	330	25	-45	200
2025-EXPLO-028	330	25	-45	200
2025-EXPLO-029	330	25	-45	200
2025-EXPLO-031	321	190	-45	200
2025-EXPLO-032	321	190	-45	200
2025-EXPLO-023	330	200	-45	300



Proposals

Ionic Leach Au anomaly + diabase contacts

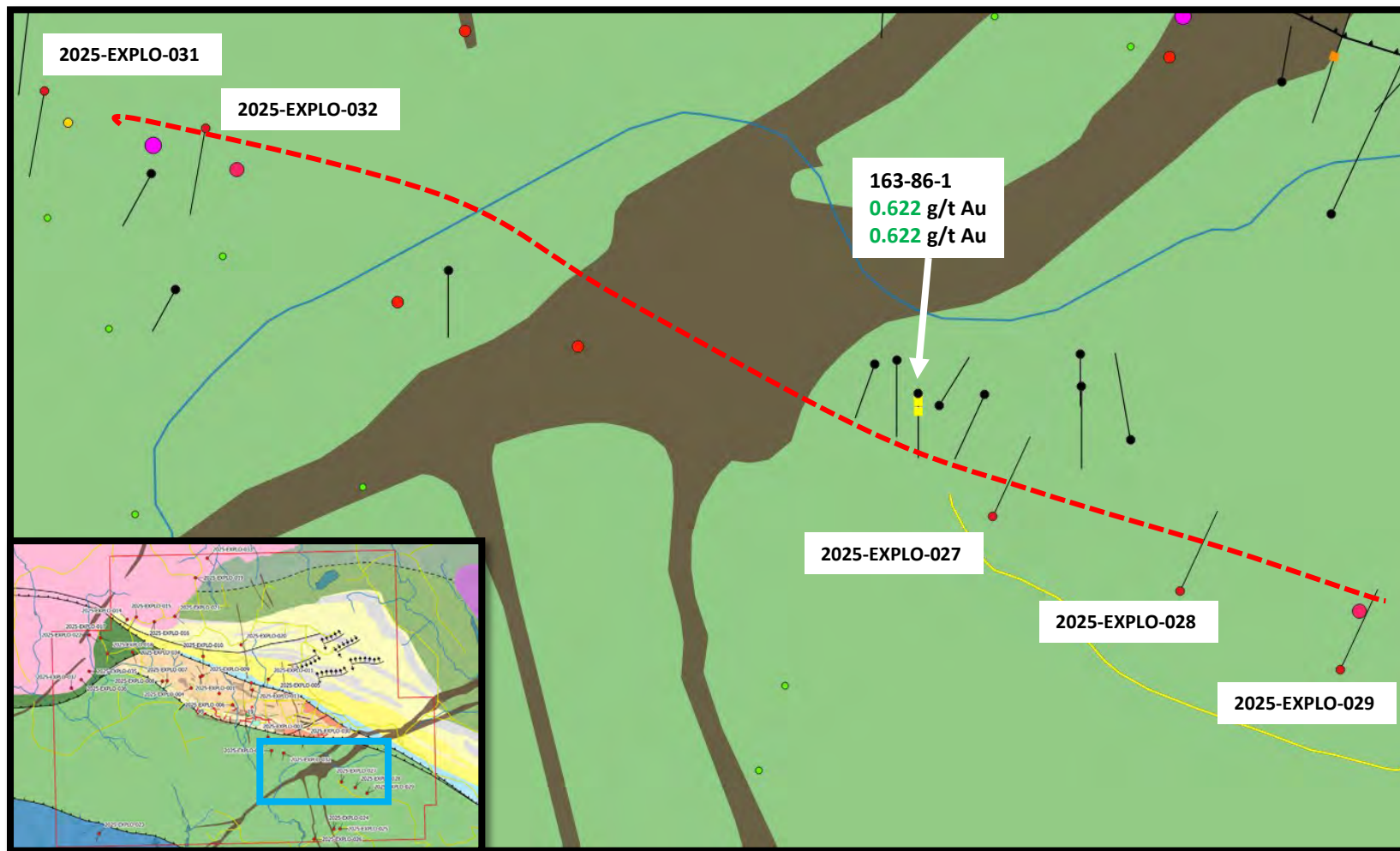
Drillhole Name	Elevation	Azimuth	Dip	Depth
2025-EXPLO-003	330	190	-45	250
2025-EXPLO-024	330	20	-45	200
2025-EXPLO-025	330	20	-45	200
2025-EXPLO-026	330	20	-45	250
2025-EXPLO-030	330	200	-45	300
2025-EXPLO-027	330	25	-45	200
2025-EXPLO-028	330	25	-45	200
2025-EXPLO-029	330	25	-45	200
2025-EXPLO-031	321	190	-45	200
2025-EXPLO-032	321	190	-45	200
2025-EXPLO-023	330	200	-45	300



Proposals

Following the trend of Ionic Leach Au anomaly

Drillhole Name	Elevation	Azimuth	Dip	Depth
2025-EXPLO-003	330	190	-45	250
2025-EXPLO-024	330	20	-45	200
2025-EXPLO-025	330	20	-45	200
2025-EXPLO-026	330	20	-45	250
2025-EXPLO-030	330	200	-45	300
2025-EXPLO-027	330	25	-45	200
2025-EXPLO-028	330	25	-45	200
2025-EXPLO-029	330	25	-45	200
2025-EXPLO-031	321	190	-45	200
2025-EXPLO-032	321	190	-45	200
2025-EXPLO-023	330	200	-45	300



Proposals

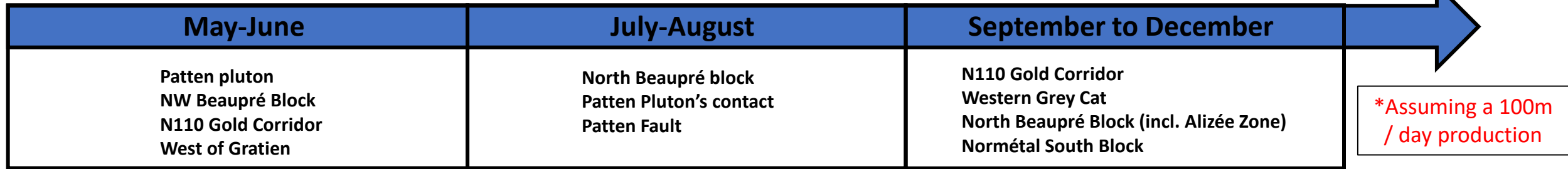
Ionic Leach Au anomaly in Chicobi sediments close to Normétal South Block

*Access likely to be an issue for this hole

Drillhole Name	Elevation	Azimuth	Dip	Depth
2025-EXPLO-003	330	190	-45	250
2025-EXPLO-024	330	20	-45	200
2025-EXPLO-025	330	20	-45	200
2025-EXPLO-026	330	20	-45	250
2025-EXPLO-030	330	200	-45	300
2025-EXPLO-027	330	25	-45	200
2025-EXPLO-028	330	25	-45	200
2025-EXPLO-029	330	25	-45	200
2025-EXPLO-031	321	190	-45	200
2025-EXPLO-032	321	190	-45	200
2025-EXPLO-023	330	200	-45	300



Timeline



Drillhole Name	Azimuth	Dip	Depth	Zone
2025-EXPLO-018	130	-45	250	Beauré fault
2025-EXPLO-017	110	-45	300	Patten Pluton's contact
2025-EXPLO-022	130	-45	350	Patten Pluton's contact
2025-EXPLO-010	180	-45	400	NW Beauré bloc N050 grade strike
2025-EXPLO-009	330	-45	350	NW Beauré bloc N050 grade strike
2025-EXPLO-001	170	-70	450	N110 Gold Corridor
2025-EXPLO-004	340	-45	150	N110 Gold Corridor
2025-EXPLO-007	200	-65	350	West of GGZ, follow-up of PEX-20-011
2025-EXPLO-008	200	-45	275	West of GGZ, follow-up of PEX-20-011
2025-EXPLO-012	190	-45	250	N110 lineament close to Normétal fault
2025-EXPLO-013	190	-45	250	N110 lineament close to Normétal fault

Drillhole Name	Azimuth	Dip	Depth	Zone
2025-EXPLO-003	190	-45	250	Follow-up of PE-21-266
2025-EXPLO-023	200	-45	300	Ionic Leach Au anomaly in Chicobi sediments
2025-EXPLO-030	200	-45	300	Ionic Leach Au anomaly + diabase contacts
2025-EXPLO-031	190	-45	200	Following the trend of Ionic Leach Au anomaly
2025-EXPLO-032	190	-45	200	Following the trend of Ionic Leach Au anomaly
2025-EXPLO-035	140	-45	350	Patten Pluton's contact & Patten fault
2025-EXPLO-036	140	-45	350	Patten Pluton's contact & Patten fault
2025-EXPLO-037	140	-45	350	Patten Pluton's contact & Patten fault

Drillhole Name	Azimuth	Dip	Depth	Zone
2025-EXPLO-014	210	-45	350	Patten Pluton's contact & Patten fault
2025-EXPLO-015	210	-50	500	Patten Pluton's contact & Patten fault
2025-EXPLO-016	200	-50	500	Patten Pluton's contact & Patten fault
2025-EXPLO-019	120	-45	300	Patten Pluton's contact
2025-EXPLO-021	130	-45	400	Patten Pluton's contact
2025-EXPLO-033	140	-45	300	Patten Pluton's contact
2025-EXPLO-020	140	-45	300	Patten fault
2025-EXPLO-002	350	-45	450	N110 Gold Corridor
2025-EXPLO-005	165	-60	500	Alizée Zone deeper extension
2025-EXPLO-006	140	-68	600	Western Grey Cat Deeper Extension
2025-EXPLO-011	190	-60	400	Normétal fault & intrusive intersection
2025-EXPLO-024	20	-45	200	Trend of Ionic Leach Au anomaly
2025-EXPLO-025	20	-45	200	Trend of Ionic Leach Au anomaly
2025-EXPLO-026	20	-45	250	Trend of Ionic Leach Au anomaly
2025-EXPLO-027	25	-45	200	Trend of Ionic Leach Au anomaly
2025-EXPLO-028	25	-45	200	Trend of Ionic Leach Au anomaly
2025-EXPLO-029	25	-45	200	Trend of Ionic Leach Au anomaly
2025-EXPLO-034	160	-45	350	Ionic Leach anomaly + Normétal fault contact

